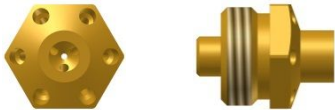


Replace nozzles for special applications

replace nozzle with additional drilling in centre of nozzle

with additional drilling in centre of nozzle
with strong centre outlet



code key:

302-56 x x x

spray angle

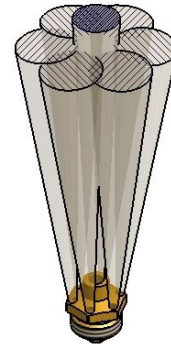
3 = spray angle 30°
 4 = spray angle 40°
 5 = spray angle 50°
 6 = spray angle 60°

number of drillings (outside)

6 = 6 drillings

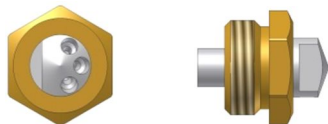
diameter of spray medium drilling

8 = 0,8mm
 0 = 1,0mm



circle-segment-nozzle

with revolvable core
allows to spray larger circle sections



code key:

303-KS x x x x / K

spray angle

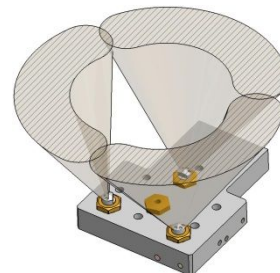
2 = spray angle 20°

number of drillings

3 = 3 drillings

diameter of spray medium drilling

08 = 0,8mm
 10 = 1,0mm



fan pattern nozzle

consisting of: mixing insert, nut and fan-shaped insert

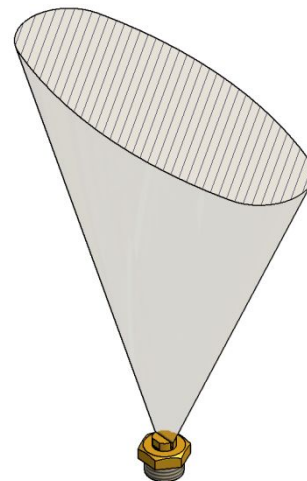


code key:

300-F16 x x

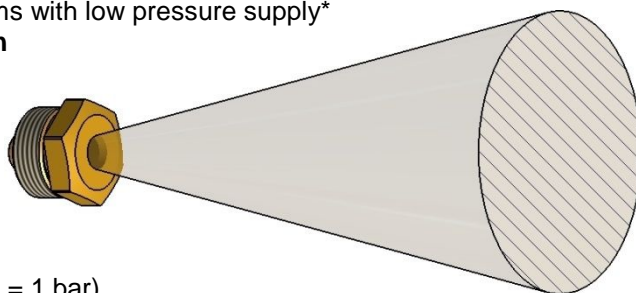
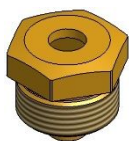
diameter of spray medium drilling

05 = 0,5mm
 08 = 0,8mm
 10 = 1,0mm



micro-spray replace nozzle

for micro atomised-spray of fluid mediums with low pressure supply*
spraying, humidification, nebulisation



*(air pressure = 2 bar, pressure medium = 1 bar)
 flow rate at 1 bar: approx. 0,65ml/sec (using water)

code key:

310-010 x x / K

diameter of spray medium drilling

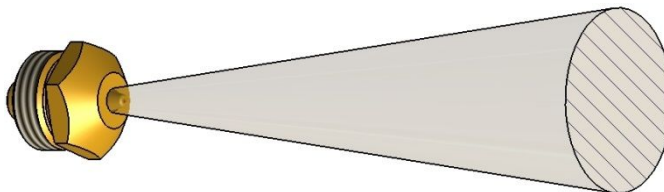
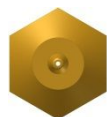
03 = 0,3mm

04 = 0,4mm

05 = 0,5mm

replace nozzle for large distance spraying

for an exact spraying up to 500mm distance



code key:

302-570 x x

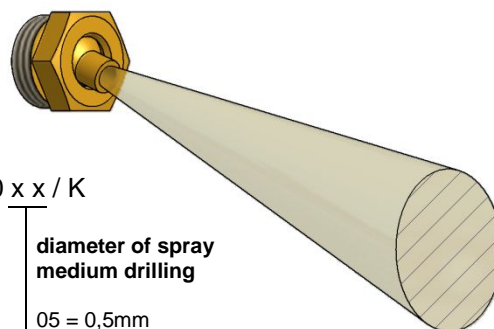
diameter of spray medium drilling

08 = 0,8mm

10 = 1,0mm

12 = 1,2mm

replace nozzle adjustable ($\pm 20^\circ$)



code key:

303-000 x x / K

diameter of spray medium drilling

05 = 0,5mm

08 = 0,8 mm

10 = 1,0 mm

12 = 1,2 mm